

## 100HX Boom Lift Advantages

- Stronger boom provides optimum strength-to-weight ratio with minimal deflection and a long service life
- Large 96 in. (2.44 m) basket for greater worker mobility
- Multi-function machine operation
- Dual Fuel or Diesel powered engine choices



### The Versatile Model 100HX+10

JLG's patented Extend-A-Reach goes even farther on the Model 100HX+10 with a 10 ft. (3.05 m) articulating jib that provides even greater "up and over" or "out and down" access versatility.

## Extendible Axle

- Reduced Gross Vehicle Weight
- Improved Mobility
- Easier to Transport



## PERFORMANCE FEATURES

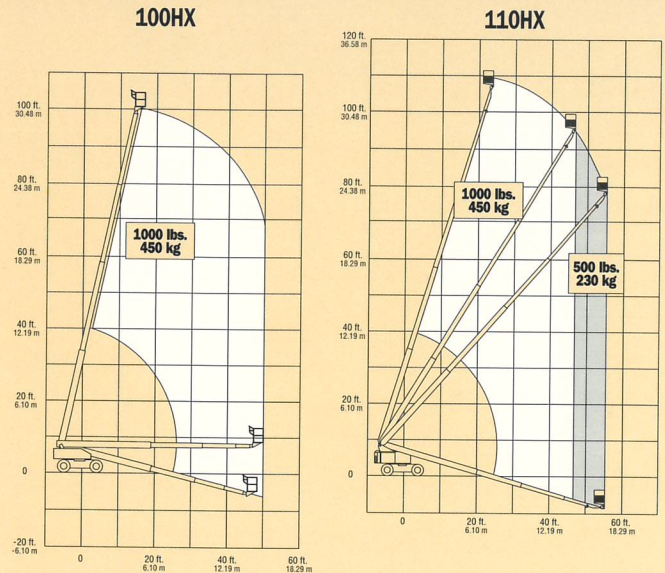
### Standard Features Include:

Hydraulic Extendible Axles (Front and Rear)	110V-AC Receptacle On Platform
36 x 96 in. (0.91 x 2.44 m) Platform	5 Degree Tilt Indicator
Inward Swinging Gate	Rim Protector Lug Tread Tires
180 Degree Hydraulic	12V-DC Auxiliary Power
Platform Rotator	Proportional Controls
	Lifting/Tie Down Lugs

### Available Options:

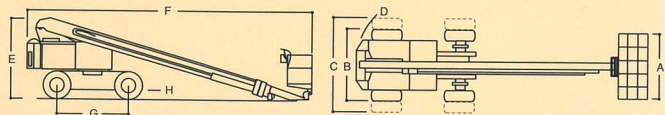
36 x 72 in. (0.91 x 1.83 m) Platform	Engine Distress Warning <sup>3</sup>
Platform Work Lights	Cold Weather Start Kit (Ford) <sup>4</sup>
1/2 in. (1.3 cm) Air Line to Platform	Cold Weather Start Kit (Deutz) <sup>4</sup>
"Soft Touch" System 6 ft. (1.83 m) <sup>1</sup>	Hostile Environment Kit <sup>5</sup>
"Soft Touch" System 8 ft. (2.44 m) <sup>1</sup>	<sup>1</sup> Extend-A-Reach required w/Soft Touch on 100HX.
2500W Generator	<sup>2</sup> Includes 5 degree tilt, flashing amber beacon and all motion alarm.
Head and Tail Lights	<sup>3</sup> Low oil pressure and high coolant temperature alarms.
Tow Package	<sup>4</sup> Includes engine block heater (Ford) or ether assist (Deutz), battery heater, oil manifold heater and oil tank heater.
Front Chassis Jack	<sup>5</sup> Includes boom wiper seals, cylinder bellows, turntable shield, and console cover.
5 Degree Tilt Alarm	
Travel Alarm	
All Motion Alarm	
Flashing Amber Beacon	
All Alarm Package <sup>2</sup>	
43.5 lb. (19.73 kg) Propane Tank	

## JLG MODEL 100HX & 110HX



### REACH SPECIFICATIONS

Platform Height	100HX	100 ft. (30.48 m)
	110HX	110 ft. (33.53 m)
Horizontal Outreach		60 ft. (18.29 m)
Swing		360° Continuous
Platform Capacity-Restricted		1000 lbs. (450 kg)
Platform Capacity-Unrestricted		500 lbs. (230 kg)
Platform Rotator		180° Hydraulic



### DIMENSIONAL DATA

A. Platform Size	36 x 96 in. (0.91 x 2.44 m)
B. Overall Width (Axles Retracted)	8 ft. 6 in. (2.59 m)
Overall Width (Axles Extended)	10 ft. 10 in. (3.3 m)
C. Tailswing (Axles Extended)	2 ft. 10 in. (86 cm)
D. Stowed Height	9 ft. 10 in. (3.0 m)
E. Stowed Length	100HX: 36 ft. 2 in. (11.02 m)
	110HX: 38 ft. 7 in. (11.76 m)
F. Wheelbase	11 ft. (3.35 m)
G. Ground Clearance	11 in. (28 cm)
Gross Vehicle Weight*	100HX: 37,000 lbs. (16,783 kg)
	110HX: 41,500 lbs. (18,829 kg)
Max. Ground Bearing Pressure	100HX: 145 psi (10.2 kg/cm <sup>2</sup> )
	110HX: 177 psi (12.4 kg/cm <sup>2</sup> )

### CHASSIS

Drive Speed	2.8 mph (4.5 km/h)
Gradeability	20%
Turning Radius (Inside)	
Axles Retracted	14 ft. 3 in. (4.34 m)
Axles Extended	14 ft. 9 in. (4.5 m)
Turning Radius (Outside)	
Axles Retracted	22 ft. 10 in. (6.96 m)
Axles Extended	24 ft. (7.32 m)
Tire Size/Type	385/65R22.5 Foam Filled

### POWER SOURCE

Dual Fuel Engine	Ford LRG-425 70 hp (52 kW)
Diesel Engine	Deutz F4L912 70 hp (52 kW)
Fuel Tank Capacity	26 gal. (98 L)
Hydraulic Reservoir	55 gal. (208 L)
Auxiliary Power	12V DC

\*Certain options or country standards will increase weight