

Libretto istruzioni

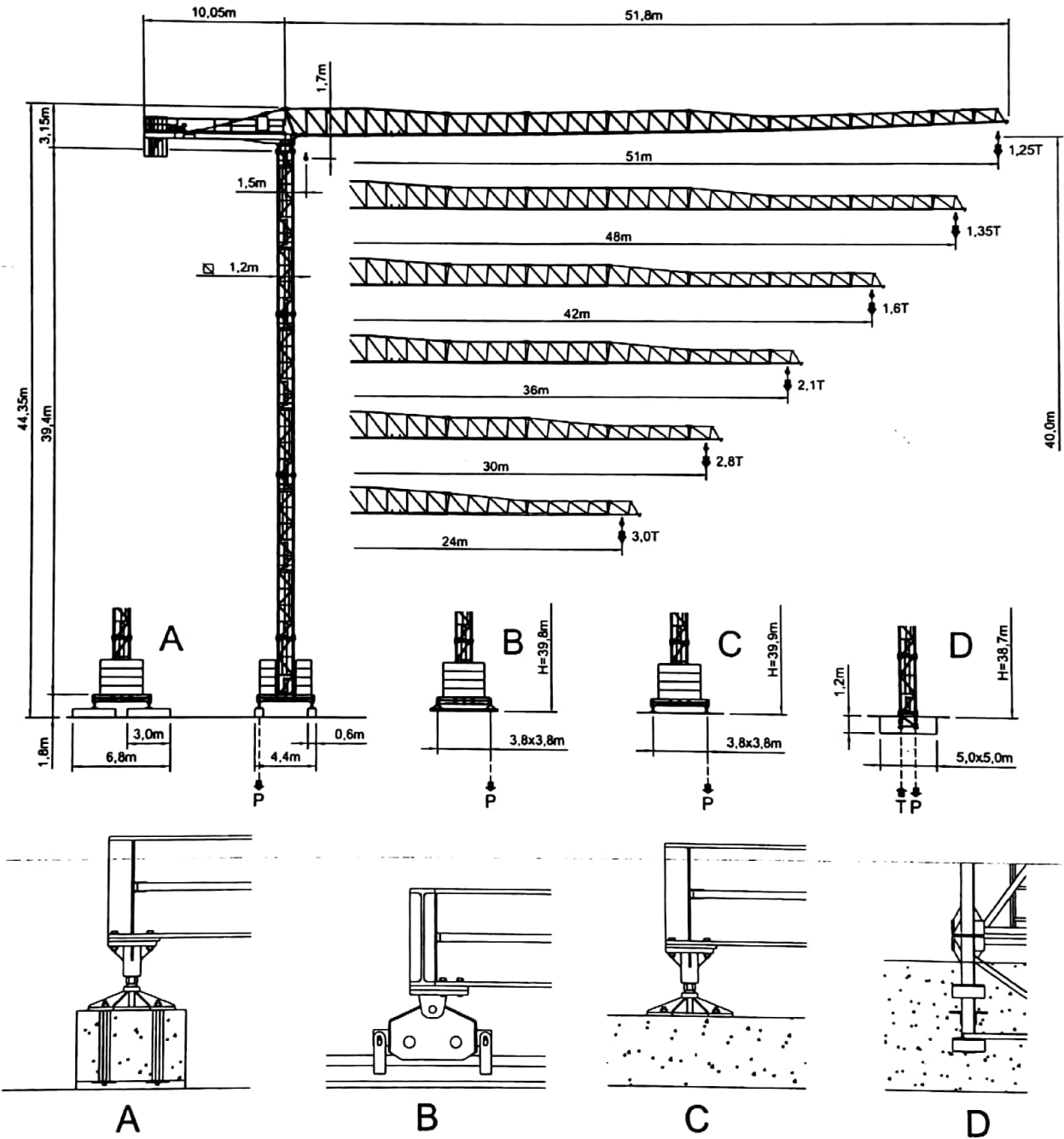
Cap.
1

CARATTERISTICHE TECNICHE GENERALI

Foglio

Pag.

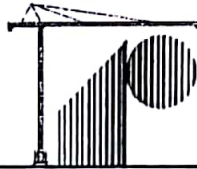
1.1



A3 FEM1,001

* AutoCAD Mechanical 2000 Power Pack *

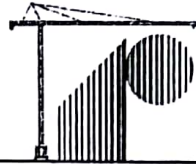
dwg



CARATTERISTICHE RAGGIO – PORTATA (2500 Kg.)

| FRECCIA (m) PORTATE (Kg.) | 51m. Kg. | 48m. Kg. | 42m. Kg. | 36m. Kg. | 30m. Kg. | |
|------------------------------|-------------|-------------|-------------|-------------|-------------|--|
| 5 | 2500 | 2500 | 2500 | 2500 | 2500 | |
| 6 | 2500 | 2500 | 2500 | 2500 | 2500 | |
| 7 | 2500 | 2500 | 2500 | 2500 | 2500 | |
| 8 | 2500 | 2500 | 2500 | 2500 | 2500 | |
| 9 | 2500 | 2500 | 2500 | 2500 | 2500 | |
| 10 | 2500 | 2500 | 2500 | 2500 | 2500 | |
| 11 | 2500 | 2500 | 2500 | 2500 | 2500 | |
| 12 | 2500 | 2500 | 2500 | 2500 | 2500 | |
| 13 | 2500 | 2500 | 2500 | 2500 | 2500 | |
| 14 | 2500 | 2500 | 2500 | 2500 | 2500 | |
| 15 | 2500 | 2500 | 2500 | 2500 | 2500 | |
| 16 | 2500 | 2500 | 2500 | 2500 | 2500 | |
| 17 | 2500 | 2500 | 2500 | 2500 | 2500 | |
| 18 | 2500 | 2500 | 2500 | 2500 | 2500 | |
| 19 | 2500 | 2500 | 2500 | 2500 | 2500 | |
| 20 | 2500 | 2500 | 2500 | 2500 | 2500 | |
| 21 | 2500 | 2500 | 2500 | 2500 | 2500 | |
| 22 | 2500 | 2500 | 2500 | 2500 | 2500 | |
| 23 | 2500 | 2500 | 2500 | 2500 | 2500 | |
| 24 | 2500 | 2500 | 2500 | 2500 | 2500 | |
| 25 | 2500 | 2500 | 2500 | 2500 | 2500 | |
| 26 | 2500 | 2500 | 2500 | 2500 | 2500 | |
| 27 | 2500 | 2500 | 2500 | 2500 | 2500 | |
| 28 | 2500 | 2500 | 2500 | 2500 | 2500 | |
| 29 | 2411 | 2420 | 2447 | 2500 | 2500 | |
| 30 | 2321 | 2329 | 2355 | 2500 | 2500 | |
| 31 | 2236 | 2244 | 2269 | 2487 | | |
| 32 | 2157 | 2165 | 2189 | 2399 | | |
| 33 | 2083 | 2090 | 2114 | 2318 | | |
| 34 | 2013 | 2020 | 2043 | 2241 | | |
| 35 | 1947 | 1954 | 1976 | 2168 | | |
| 36 | 1885 | 1892 | 1913 | 2100 | | |
| 37 | 1826 | 1833 | 1854 | | | |
| 38 | 1771 | 1777 | 1798 | | | |
| 39 | 1718 | 1725 | 1744 | | | |
| 40 | 1668 | 1675 | 1694 | | | |
| 41 | 1621 | 1627 | 1646 | | | |
| 42 | 1576 | 1582 | 1600 | | | |
| 43 | 1533 | 1538 | | | | |
| 44 | 1492 | 1497 | | | | |
| 45 | 1452 | 1458 | | | | |
| 46 | 1415 | 1420 | | | | |
| 47 | 1379 | 1384 | | | | |
| 48 | 1345 | 1350 | | | | |
| 49 | 1312 | | | | | |
| 50 | 1280 | | | | | |
| 51 | 1250 | | | | | |





| | | | | |
|-----------------------|-----------|-----------------------------------|--------|-------------|
| Libretto d'istruzione | Cap. 1 | CARATTERISTICHE TECNICHE GENERALI | Foglio | Pag. 1.3 |
|-----------------------|-----------|-----------------------------------|--------|-------------|

CARATTERISTICHE RAGGIO – PORTATA (3000 Kg.)

| FRECCIA (m) PORTATE (Kg.) | 51m. Kg. | 48m. Kg. | 42m. Kg. | 36m. Kg. | 30m. Kg. | |
|------------------------------|-------------|-------------|-------------|-------------|-------------|--|
| 5 | 3000 | 3000 | 3000 | 3000 | 3000 | |
| 6 | 3000 | 3000 | 3000 | 3000 | 3000 | |
| 7 | 3000 | 3000 | 3000 | 3000 | 3000 | |
| 8 | 3000 | 3000 | 3000 | 3000 | 3000 | |
| 9 | 3000 | 3000 | 3000 | 3000 | 3000 | |
| 10 | 3000 | 3000 | 3000 | 3000 | 3000 | |
| 11 | 3000 | 3000 | 3000 | 3000 | 3000 | |
| 12 | 3000 | 3000 | 3000 | 3000 | 3000 | |
| 13 | 3000 | 3000 | 3000 | 3000 | 3000 | |
| 14 | 3000 | 3000 | 3000 | 3000 | 3000 | |
| 15 | 3000 | 3000 | 3000 | 3000 | 3000 | |
| 16 | 3000 | 3000 | 3000 | 3000 | 3000 | |
| 17 | 3000 | 3000 | 3000 | 3000 | 3000 | |
| 18 | 3000 | 3000 | 3000 | 3000 | 3000 | |
| 19 | 3000 | 3000 | 3000 | 3000 | 3000 | |
| 20 | 3000 | 3000 | 3000 | 3000 | 3000 | |
| 21 | 3000 | 3000 | 3000 | 3000 | 3000 | |
| 22 | 3000 | 3000 | 3000 | 3000 | 3000 | |
| 23 | 3000 | 3000 | 3000 | 3000 | 3000 | |
| 24 | 2981 | 2991 | 3000 | 3000 | 3000 | |
| 25 | 2848 | 2858 | 2889 | 3000 | 3000 | |
| 26 | 2726 | 2736 | 2766 | 3000 | 3000 | |
| 27 | 2613 | 2623 | 2651 | 2902 | 3000 | |
| 28 | 2509 | 2518 | 2545 | 2787 | 3000 | |
| 29 | 2411 | 2420 | 2447 | 2680 | 2908 | |
| 30 | 2321 | 2329 | 2355 | 2580 | 2800 | |
| 31 | 2236 | 2244 | 2269 | 2487 | | |
| 32 | 2157 | 2165 | 2189 | 2399 | | |
| 33 | 2083 | 2090 | 2114 | 2318 | | |
| 34 | 2013 | 2020 | 2043 | 2241 | | |
| 35 | 1947 | 1954 | 1976 | 2168 | | |
| 36 | 1885 | 1892 | 1913 | 2100 | | |
| 37 | 1826 | 1833 | 1854 | | | |
| 38 | 1771 | 1777 | 1798 | | | |
| 39 | 1718 | 1725 | 1744 | | | |
| 40 | 1668 | 1675 | 1694 | | | |
| 41 | 1621 | 1627 | 1646 | | | |
| 42 | 1576 | 1582 | 1600 | | | |
| 43 | 1533 | 1538 | | | | |
| 44 | 1492 | 1497 | | | | |
| 45 | 1452 | 1458 | | | | |
| 46 | 1415 | 1420 | | | | |
| 47 | 1379 | 1384 | | | | |
| 48 | 1345 | 1350 | | | | |
| 49 | 1312 | | | | | |
| 50 | 1280 | | | | | |
| 51 | 1250 | | | | | |

